



Contact Lens Services

302 - 414 Graham Avenue
 Winnipeg, Manitoba R3C 0L8
 Ph: 204-942-0838 Fax: 204-949-0905
 clearvision@contactlens.ca
www.contactlens.ca

Hours

Monday - Thursday: 9 a.m. - 6 p.m.

Friday: 9:30 a.m. - 4:30 p.m.

Saturday: 10 a.m. - 2 p.m.

(Except closed Saturdays on long weekends
 and from mid June to mid September)

*After hour appointments may be
 arranged under certain circumstances.*



Specialty Services

Accelerated Overnight Ortho-Keratology

This is non-surgical, completely reversible alternative to refractive eye surgery. By wearing special overnight retainer lenses, the corneas are reshaped so that you no longer need to wear glasses or contacts during the day. Not everyone is a candidate so a consultation must be done to determine your potential.



Cleaning Services Available

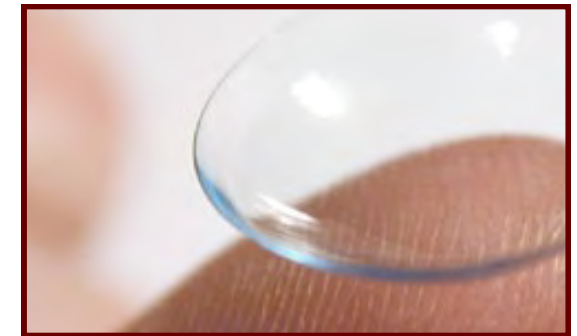
We do professional, on-site cleaning of excessively dirty or contaminated soft contact lenses. This is usually a 24-hour process.

In addition, we offer on-site cleaning and polishing of RGP lenses (dirty, scratched, or contaminated lenses). With an appointment we can do them while you wait. This usually takes approximately half an hour.



QUALITY EYE CARE FOR OVER 60 YEARS
"We put the SERVICE in contact lenses!"

Licensed **Optician** 



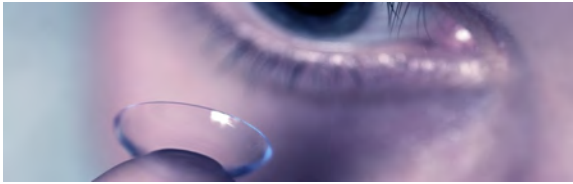
- Soft and Disposable Contact Lenses
- Rigid Gas Permeable Contact Lenses (RGP)
- Contact Lenses for Dry Eyes
- Contact Lenses for Astigmatism
- Pediatric (Children's) Contact Lenses
- Prosthetic Contact Lenses
- Contact Lenses for Presbyopia (bifocals)
- Cosmetic Tints for Light and Dark Eyes
- Accelerated Overnight Ortho-Keratology
- Glasses With All Lens Types
- Rx and non-Rx Sunglasses

Contact Lens Services

302 - 414 Graham Avenue
 Winnipeg, Manitoba R3C 0L8
 Ph: 204-942-0838 Fax: 204-949-0905
 clearvision@contactlens.ca
www.contactlens.ca

More than 60 years of experience combined

Contact Lens Department



Contact Lens Services has two highly-respected, contact lens fitters on staff to provide you with more flexibility in scheduling appointments. Patients are seen by appointment.

K. Heather Power, Contact Lens Licensed Optician, FCLSA, in optical since 1979.

" ", Contact Lens Licensed Optician, in optical since 2004.

Heather co-instructed the course **Advanced Practices Year 2 - Contact Lenses** (for Opticians) for 2 years (2009 - 2011) for the Opticians of Manitoba.

Specializing in all types of contact lenses, our niche is in finding the right solution for people who are difficult to fit for contact lenses.

We fit all types of contact lenses including:

- Soft-Traditional Replacement
- Soft-Disposable (1 day, 1 week, 2 week)
- Soft-Frequent Replacement Disposable (1 month or more)
- RGP-Custom-designed Rigid Gas Permeable

Types of Contact Lenses

Soft & Disposable

We have a huge inventory in many types and brands of soft & disposable lenses and can order many more designs and brands. We do not fit everybody into the same brand or design of lens. We believe in fitting you with the best product for your needs.

RGP

RGP are custom designed lenses which offer many advantages, including excellent vision and economy, due to their long lifespan and their durability.

Specialty Contact Lenses

Astigmatism - Available in Soft, RGP and Disposable. These products produce better vision for patients with an astigmatic Rx, than do spherical lenses.

Dry Eye - Available in Soft, RGP, and Disposable. This product is extremely suitable for patients with poor tear film or who spend a lot of time either on the computer or reading, etc. where the blink rate is significantly reduced. The soft and disposable versions do not dehydrate as quickly as regular materials, are deposit resistant, and also rehydrate effectively with comfort drops. In addition to spherical (opposite to astigmatic) single vision (opposite to presbyopia) products, we also have products in dry eye materials for astigmatism, presbyopia and presbyopia with astigmatism.

Silicone Hydrogel - Available in Disposable. A specialty soft lens material that is 3-5 times more permeable than standard soft lens materials. There are products for spherical single vision, astigmatism and presbyopia.

Presbyopia (bifocals, etc) - Available in Soft, RGP and Disposable. Designed for those patients over 40 who can no longer focus up close to read, because they require a different Rx for close work than for distance work.

Presbyopia with Astigmatism - Available in Soft, RGP and Disposable.

Cosmetic Tints for light or dark eyes - Available in Soft and Disposable.

Keratoconus - Available in Soft (special design), RGP, Piggyback, Hybrid, Mini-Scleral RGP, etc. This is an eye disease which causes the cornea to bulge forward into a cone shape. It distorts vision.

Pediatric (children) - Available in Soft, RGP, and for some children after a certain age/eye size, in Disposable.

Prosthetic - Used to control light intake and/or to match a traumatized or damaged eye to the other eye.

Corneal Topography/Mapping - We can supply a corneal map to you and/or your referring doctor.

Frame Department

Harold Klaus

Licensed Optician

Past instructor of 1st ' **Optical Sciences Eyeglasses Diploma Program** through The Opticians of Manitoba.



Contact Lens Services offers a wide selection of brand name frames, sunglasses, lens products and some accessories to choose from.

We specialize in high Rx's and multi-focal products for various tasks. It would be our pleasure to meet with you to discuss the products that can best suit your needs.

Customers are always welcome to drop in, but we recommend making an appointment beforehand to ensure you receive the very best service. Harold is often assisted by Florence Nys or Awndrea Belanger.

